

**HP Hybrid Work**  
**Endpoint Security**  
**Business Continuity**  
**Collaboration**



---

Christian Richter



# Be ready for NIS 2 – with HP

The **NIS 2 Directive** requires organizations to have the following core requirements:

1. **Information Security Policy:** Assess your risk level.
2. **Incident Prevention, Detection, and Response:**  
Have plans and backup plans, run drills and train all relevant parties.
3. **Business Continuity and Crisis Management**
4. **Supply Chain Security**
5. **Vulnerability Disclosure**



# Advancing Security beyond the Industry

HP supports and extends Intel's, AMD's and Microsoft's security features to provide **differentiated, industry-leading thread protection**

AMD

- AMD Memory Guard
- AMD Secure Processor



- Microsoft Secured Core
  - Secure Launch
  - Virtualization-Based Security for OS



intel

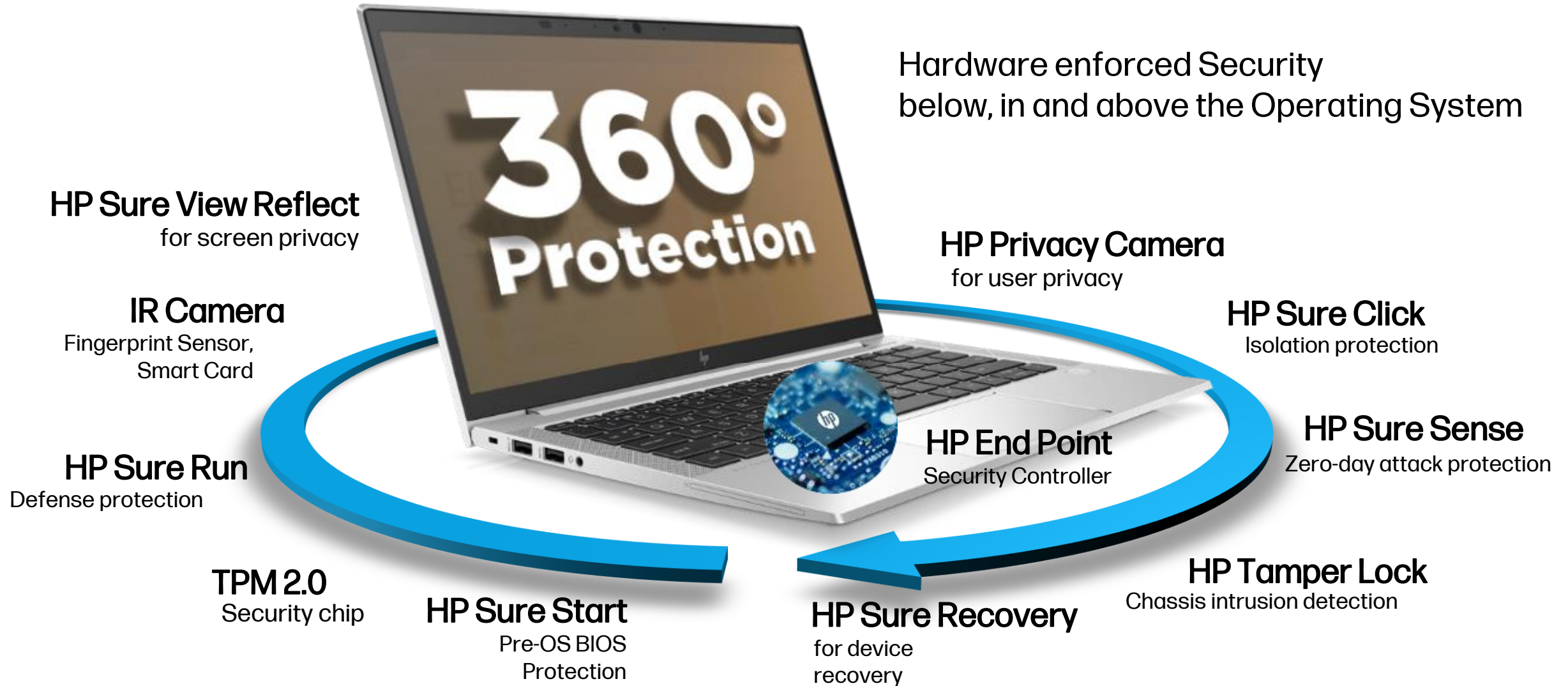
- Intel Hardware Shield
- Intel BIOS Guard



HP WOLF SECURITY

The World's Most secure PCs

# HP Wolf Security - a 360° view on Security



# HP Sure View Reflect

## Screen Privacy

Protect from Visual Hacking  
with the Click of a Button



# Firmware Resiliency

with HP Sure Start

HP ESC



Always on, persistent protection below the OS



HP WOLF SECURITY



## Validate

firmware before running code



## Stop

corrupted code from running



## Recover

a safe copy of the BIOS & Firmware



## Prevents

malicious Peripheral attacks



HP ESC = HP Endpoint Security Controller



# Business Continuity

with HP Sure Recover

Reduce time, cost, and effort to  
securely reimaging PCs



**Recover quickly**  
in minutes, not hours or days



**Flexible Recovery**  
based on local storage or cloud



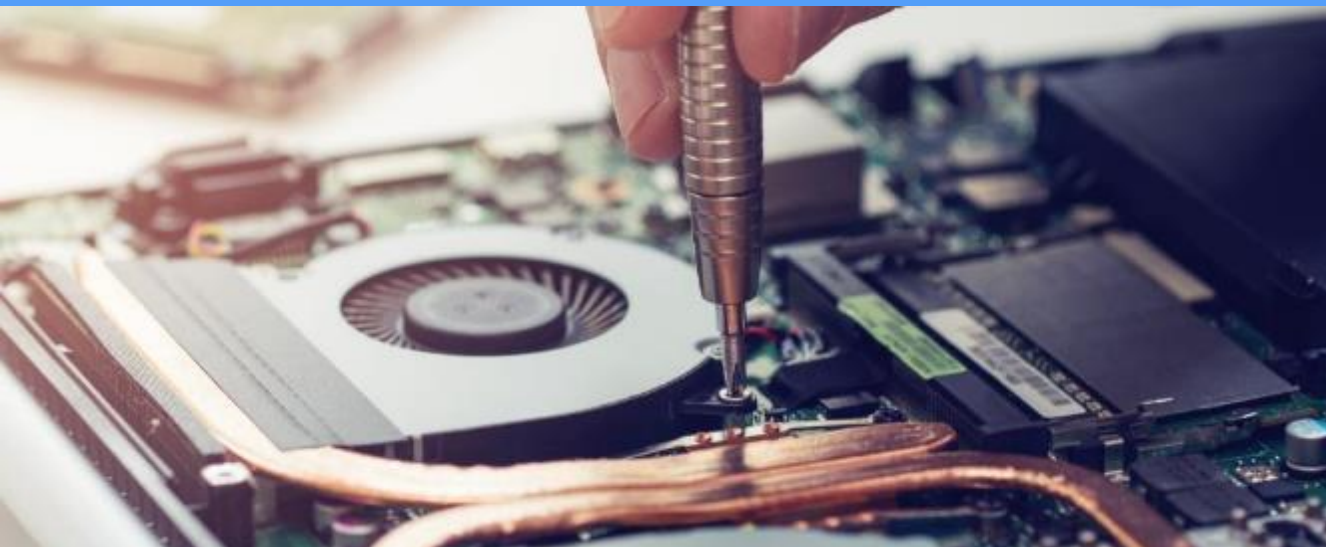
**Reimage securely**  
for trusted systems



# Peace of mind from physical intrusion

with HP Tamper Lock

Ensure PCs are protected while in transit or left unattended



**Detect & Log**  
physical intrusion



**Auto-Secure PC**  
with configurable policies that  
can clear TPM & more



**Prevent**  
Unauthorized use of PC  
via HP Sure Admin





# Worry less about a lost or stolen PC

with HP Wolf Protect and Trace



## Remotely find and secure

Remotely locate a PC and quickly secure the device by locking it or wiping its data



## Prevent bad actors bypassing lock

with hardware-enforced persistence



## Prevent unauthorized lock and wipe

with threshold cryptography

Planned



Manage PCs,  
even when offline or off  
with HP Wolf Connect



# The Endpoint is the Key Security Battleground



92%

of malware is delivered through email



67%

of malware is embedded in Word documents



ZERO-DAY ATTACKS:

57%

of endpoint attacks were missed by antivirus



# LAYERED SECURITY

PROVIDES INDUSTRY-LEADING PROTECTION AGAINST THREATS

- ✓ **HP SURE CLICK PROTECTS AGAINST ZERO DAY ATTACKS**  
and isolates in secure virtual containers
- ✓ **HP SURE RUN PROTECTS CRITICAL PROCESSES**  
and keeps HP Sure Click always up & running
- ✓ **HP SURE START PROTECTS THE FIRMWARE**  
from malware or corruption by ensuring only trusted code is executed

SURE CLICK:  
Isolates in  
Virtual Containers



Hypervisor

SMM

HP SURE START  
Protects the SMM,  
the heart of all  
Virtualization  
System Management Mode

HP Sure Start



HP SURE RUN:  
Ensures that  
Sure Click is  
always running

HP Sure Run

HARDWARE-ENFORCED BY  
HP'S ENDPOINT SECURITY CONTROLLER

# HP WOLF SECURITY

IS BUILT USING

## ZERO TRUST

PRINCIPLES



### HARDWARE-ENFORCED RESILIENCY

Hardware that can self monitor and self heal if an attack gets in




### LAYERS OF PROTECTION

Proactively prevent threats - below, in, and above the OS



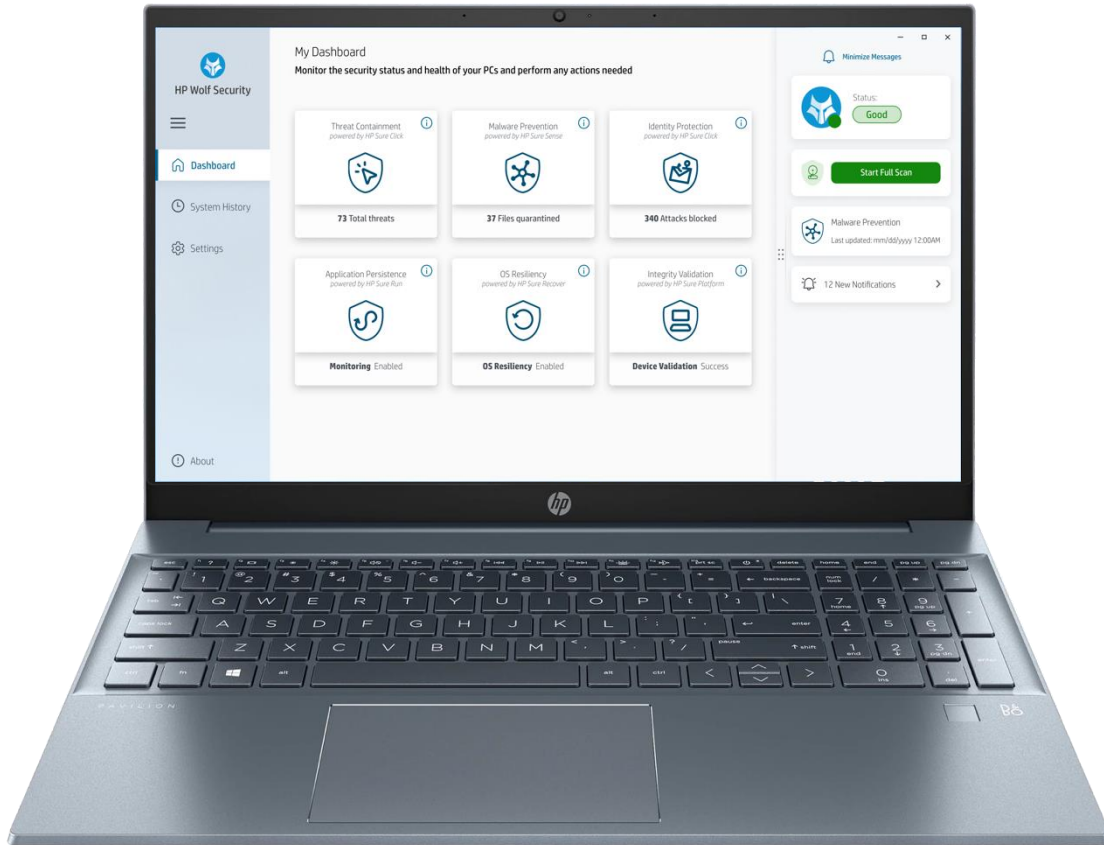
### ADVANCED LEVELS OF SECURITY

Advanced security with application isolation



“Zero Trust is a core set of principles in the design and operation of systems and their security.”

# HP Wolf Pro Security Service



A multi-layered, endpoint security service to help keep organizations safe

## LAYERED PROTECTION

Advanced tools to protect against biggest threat vectors.



Malware Prevention



Threat Containment



Identity Protection

## ACTIONABLE INSIGHTS

Relevant and timely insights to ensure endpoints are secure



Threat Assessment & Analysis



Comprehensive Reporting

## CERTIFIED SECURITY EXPERTS

Supported by HP certified security experts



Policy Configuration & Enforcement



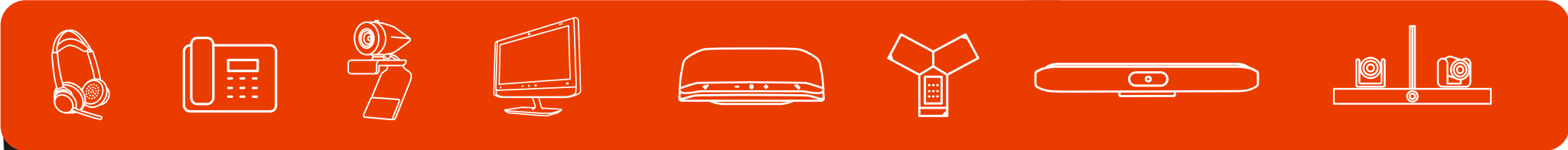
Ongoing Threat Monitoring & Infrastructure Hosting





DELIVERING THE FUTURE OF WORK

# Poly | HP born from Plantronics & Polycom & HP

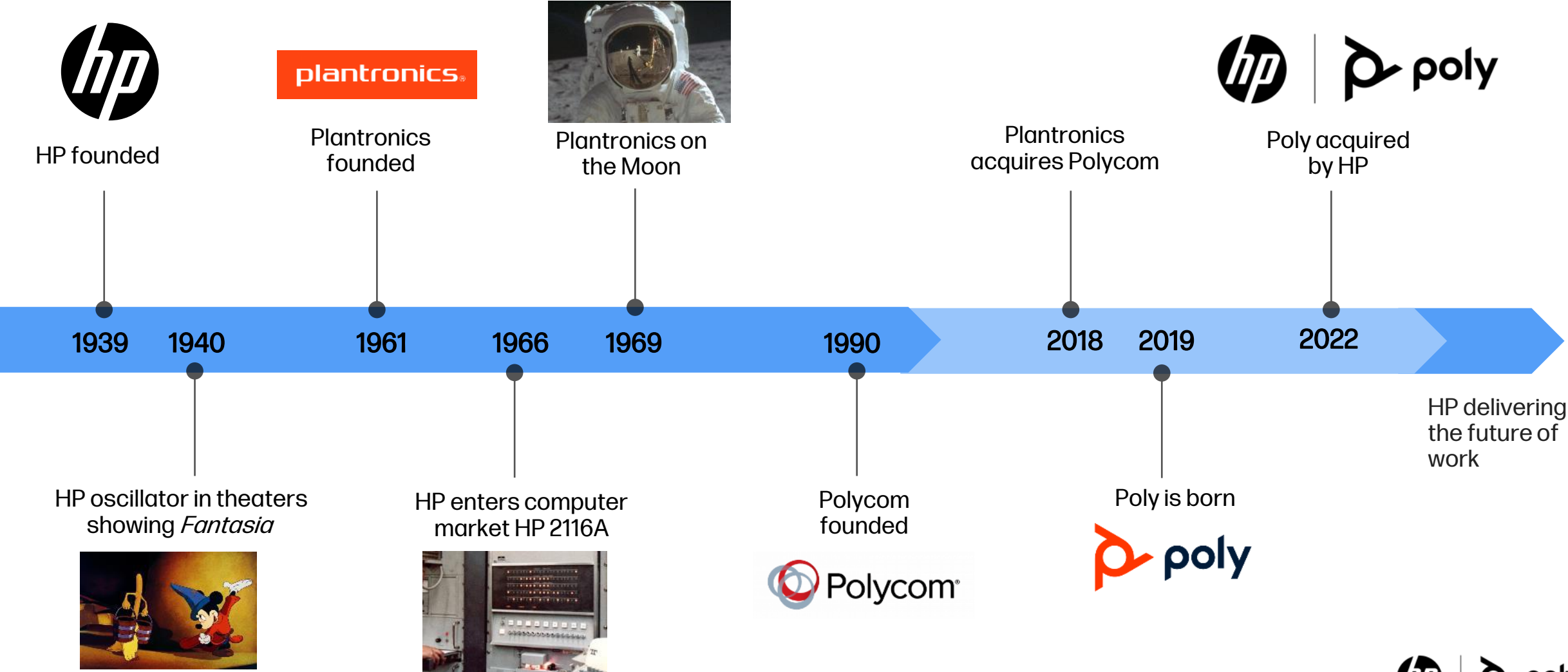


End-to-End Management & Insights

Supported by Poly Global Services & Poly global network of partners



# Timeline





# Mit unseren kombinierten Lösungen für hybrides Arbeiten ...



Damit Endnutzer gesehen und gehört werden



Die Stärken von HP  
Computer, Drucker, Displays und Peripheriegeräte



Die Stärken von Poly  
Headsets, Festnetztelefone, Video- und Raumlösungen



Damit die IT-Abteilung die Infrastruktur in einer hybriden Welt  
verwalten und schützen kann



Die Stärken von HP  
Sicherheit, Verwaltungslösungen und Services



Die Stärken von Poly  
Geräteverwaltung, Nutzungsinformationen und Services für Raumlösungen

# HP/ Poly hybrid Work Portfolio

## HEADSETS & SPEAKERS



HP Stereo



Blackwire



Voyager



Sync



Savi



EncorePro

## VOICE



CCX



Poly Edge E



Trio C60



Poly Edge B



V VX



Rove

## PERSONAL VIDEO



HP 320 / 325



HP 960 / 965



HP Presence All in One



Poly Studio P5



Poly Studio P15

## GROUP VIDEO



Studio Bundles for Zoom Rooms



Studio Kits for Microsoft Teams Rooms



Controllers



Poly Studio X



Poly Studio R30



Cameras



Integrator



SHURE  
biamp.  
APPSPACE  
Raydiant

Accessories

LENS CLOUD  
management  
APIs\*

TECHPULSE  
analytics & insights

# Danke & Viel Glück!

---

